

Mountainbrooks Ranch



**Left: large cabin,
view from
amphitheater**

**Below:
small cabin view
showing deck**



Mountainbrooks Ranch has 9 acres of forest, meadow, rocks and mountain views, located 12 miles south of Estes Park on Colorado Highway 7. Estes Park is the gateway city to the Rocky Mountain National Park and is itself a tourist attraction. Access to RMNP is also nearby at the Wild Basin entrance (1/2 mile). Lily Lake and a Park Visitor Center are a few miles north. Along Highway 7 are scenic views of Long's Peak, Mount Meeker, and other peaks.

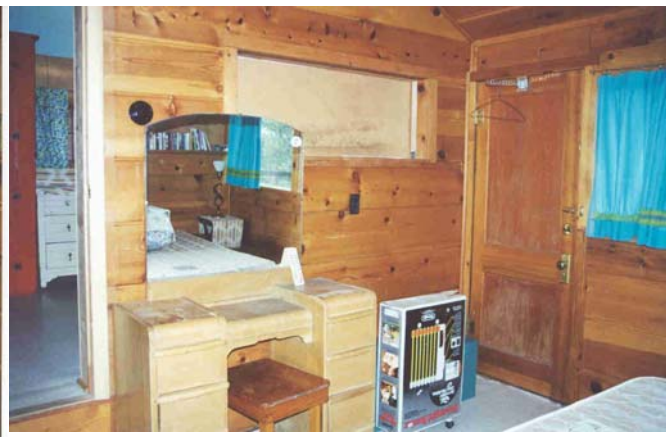


Large cabin



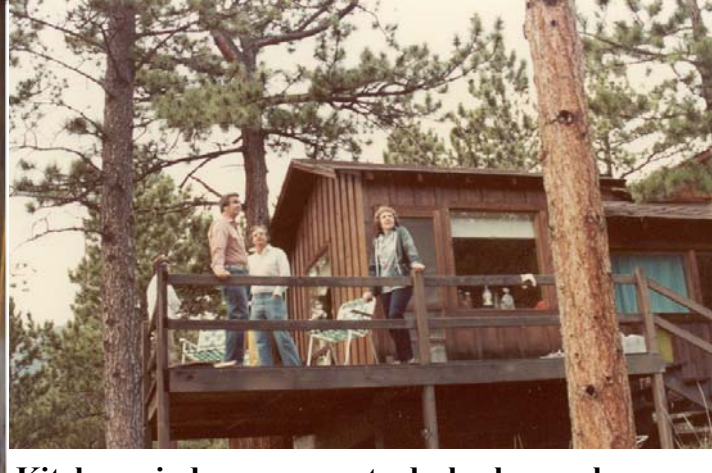
Living room also has a twin bed and piano (not shown.) Den also has a sofa bed and futon (not shown.)

Master bedroom, has queen bed. (2nd bedroom is showing through open door.)



2nd bedroom, left, has a double bed.

3rd bedroom, right, has a twin bed



Kitchen windows open onto deck, shown above.

Kitchen has microwave, gas stove, dishes & utensils.

Small cabin



View of one side of the living room.



Relaxing in the den.



This cabin is all electric and has a microwave, refrigerator and new stove.



One view of the den, which also has a sofa bed



Two bedrooms with double beds and chests of drawers .

Views of Mountainbrooks Ranch



Views of nearby areas

